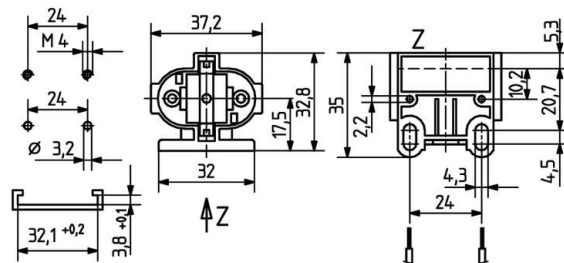
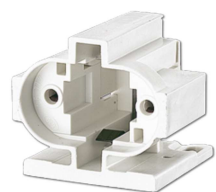


 Create pdf

Lampholders for compact fluorescent lamps

26.719.4355

G23



colour	pkg.	wt.	part no.
white	250	14 g	26.719.4355.50

Wiring: rear entry wiring





For lamps TC-S

Screw fixing horizontally

Push in fixing

Housing: PBT

- Screw fixing: long holes: \varnothing 4.3 x 4.5 mm for screws ISO 1207-M4
- Holes: \varnothing 2.2 mm for self-tapping screws with locating groove ISO 1481 - ST 2.9 - F/ ISO 4753 - SC
- Into locating grooves in fixing plate

T 140				
		0.5 - 1.0 mm ²	max. ø 1.8 mm	0.5 - 1.0 mm ²

Document generated on: We, 8. February 2017 - 14:29